



FORTUNA
GLOBAL SUPPLY CHAIN SYSTEMS



FORTUNA
GLOBAL SUPPLY CHAIN SYSTEMS



FORTUNA
Plan Copilot



Website: www.fortunaglobalsupplychain.com

E-mail: info@fortunaglobalsupplychain.com

FORTUNA GLOBAL SUPPLY CHAIN SYSTEMS

“The Future of Enterprise Intelligence.”

Company Overview

Fortuna Global Supply Chain Systems is a next-generation enterprise technology company revolutionizing the global logistics and supply chain landscape.

With a vision to create **intelligent, transparent, and connected ecosystems**, Fortuna blends innovation, data intelligence, and automation to help businesses achieve supply chain excellence.

Established with the belief that **efficiency is the new currency**, Fortuna empowers organizations to manage operations smarter — from demand planning to last-mile delivery — through real-time insights and seamless digital integration.

We are not just a technology provider; we are **partners in transformation** — driving global supply chain optimization with precision, performance, and predictive intelligence.

Fortuna Plan Co-Pilot – “AI-Powered Sales & Operations Planning”

Fortuna Plan Co-Pilot is an **AI-driven planning intelligence assistant** built to synchronize **supply, demand, and logistics** across the enterprise.

It empowers organizations to make **faster, data-driven, and reliable planning decisions** by integrating predictive analytics, scenario simulations, and real-time collaboration within a unified platform.

By acting as a **digital S&OP copilot**, Plan Co-pilot continuously learns from data, anticipates business risks, and provides actionable recommendations to achieve **end-to-end operational harmony** — from forecasting to execution.

“Fortuna Plan Co-pilot transforms planning from reactive to proactive — ensuring every decision is connected, intelligent, and executable.”



Enterprises today face growing volatility in demand, supply, and logistics networks. Traditional S&OP processes often fail to respond swiftly to changing market signals.

- AI-powered scenario modeling **for rapid what-if planning**
- Real-time alignment **across sales, operations, finance, and logistics**
- Collaborative workflows **to ensure consensus and accountability**
- Predictive learning engines **that improve accuracy over time**

⚙️ 2. System Architecture

Fortuna Plan Co-pilot operates within the **Fortuna Intelligent Planning Cloud**, built around four core layers:

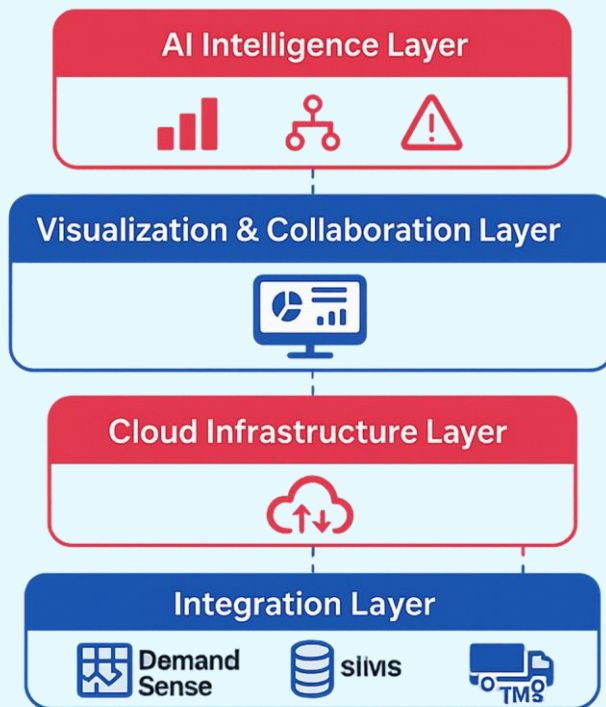
1 Integration Layer - Real-time data sync with ERP, CRM, DemandSense, SIMS, and TMS.

2 Cloud Infrastructure Layer – Secure SaaS framework hosted on AWS / Azure for global scalability.

3 AI Intelligence Layer – Predictive forecasting, scenario optimization, and risk analysis.

4 Visualization & Collaboration Layer – Interactive dashboards, workflow automation, and AI Co-pilot interface.

FORTUNA PLANCOPILOT



Product Modules, Sub-Modules & Operational Functionality

1: Demand & Supply Alignment Engine

Submodules:

- **Unified Data Repository** – Integrates forecasts, orders, production, and logistics data.
- **Cross-Functional Consensus Planning** – Sales, supply, and finance collaborate in one view.
- **AI Forecast Integration** – Imports predictive models from *Fortuna DemandSense*.
- **Gap & Variance Analyzer** – Detects plan mismatches across departments.

Operational Functionality:

- Aggregates and harmonizes enterprise-wide data.
- Enables consensus-based decision-making with automated alerts.
- Balances supply capacity against forecasted demand dynamically.
- Visual variance reports for management and planning teams.

2: Scenario Simulation & Optimization

Submodules:

- **What-If Simulation Engine** – Models scenarios for demand surges, capacity shifts, or delays.
- **AI Constraint Solver** – Accounts for production limits, labor, and logistics dependencies.
- **Profitability Impact Analyzer** – Quantifies financial implications of plan alternatives.
- **Risk & Resilience Planner** – Provides backup options and response strategies.

Operational Functionality:

- AI simulates and ranks best-fit scenarios within seconds.
- Provides actionable insights on service levels, cost impact, and fulfillment capacity.
- Enables leadership teams to approve optimal plans with data transparency.

\$ 3: Finance & Budget Synchronization

Submodules:

- **Operational-Financial Alignment** – Connects S&OP outputs to P&L projections.
- **Revenue & Cost Balancing Engine** – Evaluates revenue vs. capacity trade-offs.
- **Margin & ROI Tracker** – Monitors profitability across plan variants.
- **Budget Forecast Simulator** – Real-time budget projection based on plan changes.

Operational Functionality:

- Synchronizes planning decisions with financial outcomes.
- Ensures production and procurement align with profitability targets.
- Provides cost sensitivity analysis to avoid budget overruns.
- Generates rolling financial forecasts linked to operational plans.

✓ 4: Collaboration & Governance Hub

Submodules:

- **AI Meeting Copilot** – Summarizes discussions and action items automatically.
- **Approval Workflow Engine** – Defines authority levels and plan validation steps.
- **Decision Traceability Log** – Records rationale for each planning decision.
- **Task & Responsibility Dashboard** – Assigns accountability across departments.

Operational Functionality:

- Converts planning sessions into actionable workflows.
- Provides instant summaries for leadership teams.
- Maintains a clear audit trail for compliance and transparency.
- Enhances speed of decision-making through structured governance.

5: Logistics Orchestration & S&OE Bridge

Submodules:

- **Logistics Feasibility Checker** – Validates transport and yard availability before plan freeze.
- **AI Capacity Matcher** – Aligns logistics resources with supply schedules.
- **Dynamic Rescheduling Engine** – Adjusts short-term plans based on transport data.
- **Execution Bridge (S&OE)** – Links planning to day-to-day operational execution.

Operational Functionality:

- Synchronizes logistics with production and demand forecasts.
- Predicts bottlenecks using live feeds from Fortuna TMS, YardSync, and LastMile AI.
- Suggests route or slot adjustments proactively.
- Bridges S&OP (strategic) and S&OE (execution) horizons seamlessly.

6: AI Insights & Continuous Learning

Submodules:

- **Forecast Accuracy Dashboard** – Tracks plan performance vs actual results.
- **Learning Loop Engine** – Auto-improves forecasting models using feedback.
- **Executive BI Dashboard** – Real-time KPIs and trends visualization.
- **Planning Health Index** – Measures planning process maturity and efficiency.

Operational Functionality:

- AI identifies recurring inefficiencies and root causes.
- Continuously refines predictive algorithms for better future accuracy.
- Provides executives with visual insights and improvement areas.
- Enables adaptive learning cycles for sustained optimization.

7: Integration & Automation Layer

Submodules:

- **API Connectors** – Integrates ERP, CRM, TMS, DemandSense, SIMS, and ConnectHub.
- **Data Governance Framework** – Ensures clean, verified, and auditable data flow.
- **Workflow Automation Bots** – Automates repetitive approval and data entry tasks.
- **Security & Compliance Engine** – Role-based access and audit control.

Operational Functionality:

- Enables two-way data synchronization across systems.
- Reduces manual effort through event-triggered automation.
- Protects sensitive business data with enterprise-grade encryption.
- Supports both cloud and hybrid IT environments.

8: Data Foundation & Quality Management

Submodules:

- **Data Integrity Scanner** – Detects missing or inconsistent master data.
- **Anomaly Detection Engine** – Flags abnormal patterns in planning data.
- **Master Data Control Hub** – Centralizes key SKU, BOM, and location data.
- **Data Freshness Monitor** – Ensures all data inputs are current and accurate.

Operational Functionality:

- Ensures accuracy of every planning decision.
- Prevents forecast and capacity errors caused by outdated data.
- Enhances trust and transparency across enterprise systems.
- Strengthens overall reliability of AI-driven insights.

Functional Workflows

A. S&OP Planning Cycle

1. Data Collection & Aggregation (ERP, CRM, DemandSense, SIMS) →
2. AI Forecast & Alignment →
3. Scenario Simulation →
4. Consensus Planning →
5. Financial Integration →
6. Logistics Feasibility Check →
7. Final Plan Approval & Execution

B. Adaptive Planning Workflow

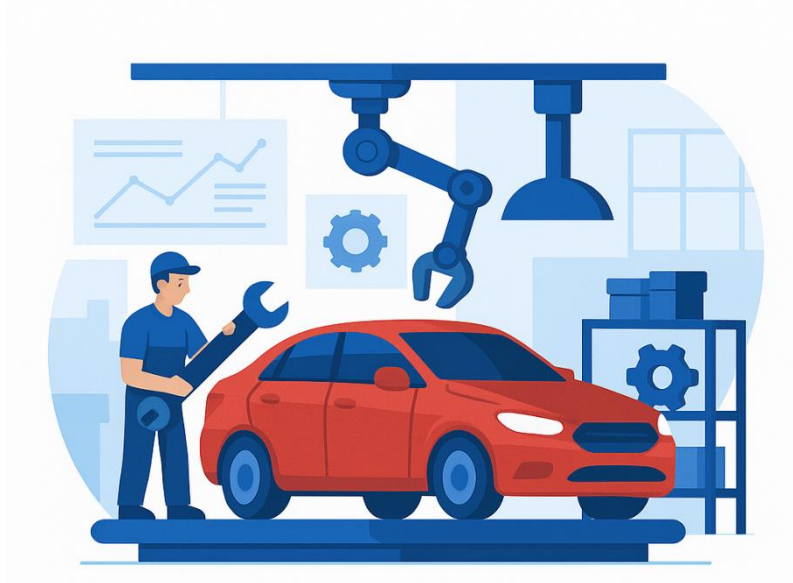
1. Real-Time Event Trigger (Supply / Demand / Logistics) →
2. AI Suggests Revised Plan →
3. User Approval via Co-pilot Interface →
4. Auto-Sync with Execution Systems →
5. Continuous Learning Feedback Loop

Fortuna Co-Pilot Advantages

Feature	Business Value
<i>AI Powered Planning Assistant</i>	Faster & More Reliable decision making.
<i>Unified Data Modelling</i>	True end-to-end alignment across Supply, demand & Planning
<i>Scenario Simulation</i>	Risk free, Predictive Planning
<i>Financial & Logistics Sync</i>	Seamless integration between strategy & execution.
<i>Continuous AI Learning</i>	Self-Improving intelligence engine
<i>Cloud Collaboration</i>	Real Time Planning Anywhere, Securely

Industries Served

Automotive & Industrial Manufacturing



FGSCM - supports the automotive sector with advanced logistics planning, vendor coordination, and predictive maintenance scheduling. From global parts movement to plant-level production support, our systems reduce lead times and enhance supply chain agility

FORTUNA
GLOBAL SUPPLY CHAIN SYSTEMS

Ports & Logistics

Fortuna supports the automotive sector with advanced logistics planning, vendor coordination, and predictive maintenance scheduling. From global parts movement to plant-level production support, our systems reduce lead times and enhance supply chain agility



Food & Beverage Distribution



Freshness and safety are at the heart of Food & Beverage -supply chains. We enable end-to-end visibility with IoT-driven tracking, automated quality checks, and predictive demand planning—ensuring traceability from farm to fork.



Fashion & Retail Industry

With High seasonal demand & agile supply chain Planning, Fortuna will empowers retailers with faster replenishment & reduces stock outs



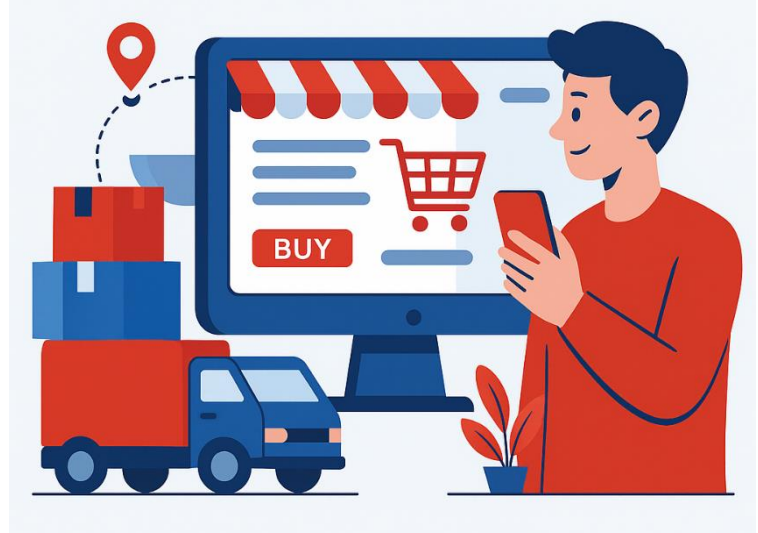
Pharma & Healthcare



Medical safety and regulatory compliance are non-negotiable. We provide automated solutions for cold chain logistics, product traceability, and compliance monitoring—ensuring life-saving medicines and healthcare products reach destinations safely and efficiently.

E-Commerce & Distributional Channels

In a fast-moving E-Com world, speed and efficiency are critical. Our platforms enable automated order management, demand forecasting, and last-mile delivery optimization—ensuring customers receive the right products, at the right time, every time.





Corporate Identity



Headquarters: Visakhapatnam, Andhra Pradesh, India

Website: www.fortunaglobalsupplychain.com

Email: info@fortunaglobalsupplychain.com